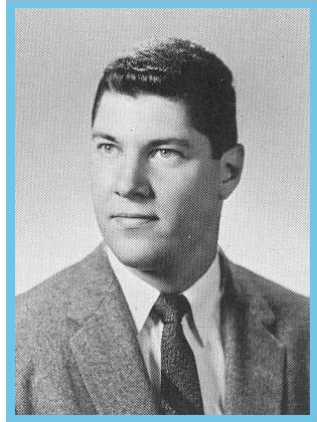


***Sorrell Chesin '58
Research Award***

GENESEO



"I wasn't sure I made the right decision to transfer to Geneseo. From the Bronx to a small town would be a major adjustment. More people lived on my street than lived in the town. Talk about an adjustment! At least there was a movie theater, open on weekends and a bowling alley in town. How's that for entertainment?"



As I walked on the street, people wished me "good morning." Faculty focused on the students as they lectured. The campus environment was engaging and welcoming. I joined clubs, met students from different places, looked forward to each day and sought to do my best. I thought about Psychology Professor Richard Bloomer, who allowed me to participate on a research project he was undertaking. It was an extraordinary experience for me. I was thinking about all this when my name was called and, dressed in an academic robe, I walked across the stage and received my degree. Where did the time go? In retrospect, those college years were a transformative experience and set the foundation for my professional career in higher education. I owed something!

The reason I established this fund was based on that experience. To my surprise, the research article was published in The Journal of Educational Research in 1960 and he included my name as his co-author."

Sorrell Chesin began his undergraduate education at NYU but completed it with a B.S. from the SUNY College at Geneseo. His M.A. is from Syracuse University and his Ph.D. from Michigan State University, where he served as a Head Resident Advisor.

He dedicated his career to the advancement of higher education. He held an administrative and part-time faculty position at the University of Bridgeport (CT) prior to being appointed Associate Dean of Students at SUNY Albany in 1965. He held several senior administrative positions over the course of his tenure, including service as Executive Director of the University at Albany Foundation, and retired in 2013 as Associate Vice President for University Development. Upon retirement, he was elected to the Board of Directors of the UAlbany Emeritus Center, an association of retired faculty, administrators and professional personnel and served as its Vice President and then President.

Sorrell Chesin '58 Research Award

The purpose of the endowed fund is to provide financial support to establish undergraduate student research awards designed to recognize those students who have successfully undertaken a research experience in the natural sciences and related disciplines under the direction or mentorship of a faculty member in the field of study and to promote this research experience.

Guidelines

- Student nominees must be full-time juniors or seniors.
- Students must have conducted research with a faculty member for the fall semester of the current year and must plan to continue the research into the spring semester.
- Funds must be utilized for a research project overseen by a faculty mentor or may be used to augment an Undergraduate Travel Grant for a conference presentation.
- These funds may be in addition to other grants, fellowships and assistantships students have receive for their projects.
- Awards will range from \$250 to \$500, and its equivalent amount in the future.

Process

- Department(s) reflective of the donor's designation will be determined each fall by the Office of Sponsored Research.
- A nomination form will be made available to faculty in selected department(s) by October 1.
- Each department chair or program director asked to issue a call for nominations to their faculty members.
- Nominations will be due by on the first Monday of December each year.
- Recipients will be selected by the beginning of the spring semester by the Office of Sponsored Research staff, in conjunction with appropriate department chairs/program directors.
- The Office of Sponsored Research will generate award letters and will provide students with instructions on how to access their award.

2024 Award Recipients

up to \$600 awards

Sophia Altman

Developing a Protocol to Identify Changes in DNA Methylation Patterns in Philippine Scad Fish in Response to Global Climate Change
Faculty Sponsor: Salvador Tarun, Chemistry

Fatima Bartley

Antimicrobial Properties of Secondary Metabolites Extracted from Three Selected Nigerian Plants
Faculty Sponsor: Ifeoma Enweani-Nwokelo, Biology

Madison Bulkley

Investigating Courtship, Display Behaviors, and Personality of Ant-Mimicking Spiders
Faculty Sponsor: Jennifer Apple, Biology

Amanda DiMatteo

*Verifying *Ano3* Function*
Faculty Sponsor: Tara Sweet, Biology

Ashley Felber

Developing a Protocol to Identify Changes in DNA Methylation Patterns in Philippine Scad Fish in Response to Global Climate Change
Faculty Sponsor: Salvador Tarun, Chemistry

Madison Forcier

*Phenotyping *APOE4* KI Mutant Mice for Characteristics of Alzheimer's Disease*
Faculty Sponsor: Allison Bechard, Neuroscience

Ryan Hacker *Synthesis and Evaluation of Ruthenium-Arene Complexes to Modulate the Aggregation of Amyloid-B Peptide*
Faculty Sponsor: Michael Webb, Chemistry

Kia Haering

Imaging of Cancer Cell by Utilizing Surface Enhanced Raman Scattering Process
Faculty Sponsor: Kazushige Yokoyama, Chemistry

Abbey Hanes

Importance of Domain 6a in R2Bm Binding Upstream of Target DNA

Faculty Sponsor: Varuni Jamburuthugoda, Biology

Margaret Hintz

Screening for Small Molecule Inhibitors of Spike-ACE2 Binding

Faculty Sponsor: Eric Helms, Chemistry

Daniel Maskovsky *Study of MDH Mutants in the Flexible Loop Region Using Enzyme Kinetics*

Faculty Sponsor: Varuni Jamburuthugoda, Biology

Nicole Mathewson

Antimicrobial Properties of Secondary Metabolites Extracted from Three Selected Nigerian Plants

Faculty Sponsor: Ifeoma Enweani-Nwokelo, Biology

Joel Mukkatt

Imaging Aggregation Process of Gold Nano-particle Attached Proteins

Faculty Sponsor: Kazushige Yokoyama, Chemistry

Mack Ogden

Examining UMSCV-4 for Rates of Apoptosis Versus Cell Quiescence

Faculty Sponsor: Jani Lewis, Biology

Hannah Reid

Investigating Courtship, Display Behaviors, and Personality of Ant-Mimicking Spiders

Faculty Sponsor: Jennifer Apple, Biology

Dana Schoeps

The Impact of the DNA methylation Inhibitor CM-272 on Bacterial Growth

Faculty Sponsor: Kevin Militello, Biology

Taylor Stolberg

Kirby-Bauer Analysis of the Bacterial DNA Methylation Inhibitors

Faculty Sponsor: Kevin Militello, Biology