

77

GRE®

THE GRADUATE RECORD
EXAMINATIONS®

PHYSICS TEST

*Do not break the seal
until you are told to do so.*

*The contents of this test are confidential.
Disclosure or reproduction of any portion
of it is prohibited.*

THIS TEST BOOK MUST NOT BE TAKEN FROM THE ROOM.

GRE, GRADUATE RECORD EXAMINATIONS, ETS, EDUCATIONAL TESTING SERVICE, and the ETS logo are registered trademarks of Educational Testing Service.

Copyright © 1996 by Educational Testing Service. All rights reserved.
Princeton, N.J. 08541

SIDE 1

A. fill in both ovals here . . . ☐ - ☐ B. sign your full name here: _____

SIDE 2

SUBJECT TEST

COMPLETE THE
CERTIFICATION STATEMENT,
THEN TURN ANSWER SHEET
OVER TO SIDE 1.

CERTIFICATION STATEMENT

Please write the following statement below, DO NOT PRINT.

"I certify that I am the person whose name appears on this answer sheet. I also agree not to disclose the contents of the test I am taking today to anyone." Sign and date where indicated.

SIGNATURE: _____

DATE: _____

Month Day Year

BE SURE EACH MARK IS DARK AND COMPLETELY FILLS THE INTENDED SPACE AS ILLUSTRATED HERE: ●

YOU MAY FIND MORE RESPONSE SPACES THAN YOU NEED. IF SO, PLEASE LEAVE THEM BLANK.

| | | | | | |
|-----|---|---|---|---|---|
| 115 | A | B | C | D | E |
| 116 | A | B | C | D | E |
| 117 | A | B | C | D | E |
| 118 | A | B | C | D | E |
| 119 | A | B | C | D | E |
| 120 | A | B | C | D | E |
| 121 | A | B | C | D | E |
| 122 | A | B | C | D | E |
| 123 | A | B | C | D | E |
| 124 | A | B | C | D | E |
| 125 | A | B | C | D | E |
| 126 | A | B | C | D | E |
| 127 | A | B | C | D | E |
| 128 | A | B | C | D | E |
| 129 | A | B | C | D | E |
| 130 | A | B | C | D | E |
| 131 | A | B | C | D | E |
| 132 | A | B | C | D | E |
| 133 | A | B | C | D | E |
| 134 | A | B | C | D | E |
| 135 | A | B | C | D | E |
| 136 | A | B | C | D | E |
| 137 | A | B | C | D | E |
| 138 | A | B | C | D | E |
| 139 | A | B | C | D | E |
| 140 | A | B | C | D | E |
| 141 | A | B | C | D | E |
| 142 | A | B | C | D | E |
| 143 | A | B | C | D | E |
| 144 | A | B | C | D | E |
| 145 | A | B | C | D | E |
| 146 | A | B | C | D | E |
| 147 | A | B | C | D | E |
| 148 | A | B | C | D | E |
| 149 | A | B | C | D | E |
| 150 | A | B | C | D | E |
| 151 | A | B | C | D | E |
| 152 | A | B | C | D | E |
| 153 | A | B | C | D | E |
| 154 | A | B | C | D | E |
| 155 | A | B | C | D | E |
| 156 | A | B | C | D | E |
| 157 | A | B | C | D | E |
| 158 | A | B | C | D | E |
| 159 | A | B | C | D | E |
| 160 | A | B | C | D | E |
| 161 | A | B | C | D | E |
| 162 | A | B | C | D | E |
| 163 | A | B | C | D | E |
| 164 | A | B | C | D | E |
| 165 | A | B | C | D | E |
| 166 | A | B | C | D | E |
| 167 | A | B | C | D | E |
| 168 | A | B | C | D | E |
| 169 | A | B | C | D | E |
| 170 | A | B | C | D | E |
| 171 | A | B | C | D | E |
| 172 | A | B | C | D | E |
| 173 | A | B | C | D | E |
| 174 | A | B | C | D | E |
| 175 | A | B | C | D | E |
| 176 | A | B | C | D | E |
| 177 | A | B | C | D | E |
| 178 | A | B | C | D | E |
| 179 | A | B | C | D | E |
| 180 | A | B | C | D | E |
| 181 | A | B | C | D | E |
| 182 | A | B | C | D | E |
| 183 | A | B | C | D | E |
| 184 | A | B | C | D | E |
| 185 | A | B | C | D | E |
| 186 | A | B | C | D | E |
| 187 | A | B | C | D | E |
| 188 | A | B | C | D | E |
| 189 | A | B | C | D | E |
| 190 | A | B | C | D | E |
| 191 | A | B | C | D | E |
| 192 | A | B | C | D | E |
| 193 | A | B | C | D | E |
| 194 | A | B | C | D | E |
| 195 | A | B | C | D | E |
| 196 | A | B | C | D | E |
| 197 | A | B | C | D | E |
| 198 | A | B | C | D | E |
| 199 | A | B | C | D | E |
| 200 | A | B | C | D | E |
| 201 | A | B | C | D | E |
| 202 | A | B | C | D | E |
| 203 | A | B | C | D | E |
| 204 | A | B | C | D | E |
| 205 | A | B | C | D | E |
| 206 | A | B | C | D | E |
| 207 | A | B | C | D | E |
| 208 | A | B | C | D | E |
| 209 | A | B | C | D | E |
| 210 | A | B | C | D | E |
| 211 | A | B | C | D | E |
| 212 | A | B | C | D | E |
| 213 | A | B | C | D | E |
| 214 | A | B | C | D | E |
| 215 | A | B | C | D | E |
| 216 | A | B | C | D | E |
| 217 | A | B | C | D | E |
| 218 | A | B | C | D | E |
| 219 | A | B | C | D | E |
| 220 | A | B | C | D | E |
| 221 | A | B | C | D | E |
| 222 | A | B | C | D | E |
| 223 | A | B | C | D | E |
| 224 | A | B | C | D | E |
| 225 | A | B | C | D | E |
| 226 | A | B | C | D | E |
| 227 | A | B | C | D | E |
| 228 | A | B | C | D | E |
| 229 | A | B | C | D | E |
| 230 | A | B | C | D | E |
| 231 | A | B | C | D | E |
| 232 | A | B | C | D | E |
| 233 | A | B | C | D | E |
| 234 | A | B | C | D | E |
| 235 | A | B | C | D | E |
| 236 | A | B | C | D | E |
| 237 | A | B | C | D | E |
| 238 | A | B | C | D | E |
| 239 | A | B | C | D | E |
| 240 | A | B | C | D | E |
| 241 | A | B | C | D | E |
| 242 | A | B | C | D | E |

IF YOU DO NOT WANT THIS ANSWER SHEET TO BE SCORED

If you want to cancel your scores from this administration, complete A and B below. You will not receive scores for this test; however, you will receive confirmation of this cancellation. No record of this test or the cancellation will be sent to the recipients you indicated, and there will be no scores for this test on your GRE file. Once a score is canceled, it cannot be reinstated.

To cancel your scores from this test administration, you must:

A. fill in both ovals here . . . ○ - ○ B. sign your full name here: _____

| TR | TW | TFS | TCS | 1R | 1W | 1FS | 1CS | 2R | 2W | 2FS | 2CS |
|------------------|----|-----|-----|----|----|-----|-----|----|----|-----|-----|
| FOR ETS USE ONLY | | | | 3R | 3W | 3FS | 3CS | 4R | 4W | 4FS | 4CS |
| | | | | 5R | 5W | 5FS | 5CS | 6R | 6W | 6FS | 6CS |

TABLE OF INFORMATION

| | |
|----------------------------------|--|
| Rest mass of the electron | $m_e = 9.11 \times 10^{-31}$ kilogram $= 9.11 \times 10^{-28}$ gram |
| Magnitude of the electron charge | $e = 1.60 \times 10^{-19}$ coulomb $= 4.80 \times 10^{-10}$ statcoulomb (esu) |
| Avogadro's number | $N_0 = 6.02 \times 10^{23}$ per mole |
| Universal gas constant | $R = 8.32$ joules/(mole \cdot K) |
| Boltzmann's constant | $k = 1.38 \times 10^{-23}$ joule/K $= 1.38 \times 10^{-16}$ erg/K |
| Speed of light | $c = 3.00 \times 10^8$ m/s $= 3.00 \times 10^{10}$ cm/s |
| Planck's constant | $h = 6.63 \times 10^{-34}$ joule \cdot second $= 4.14 \times 10^{-15}$ eV \cdot second $\hbar = h/2\pi$ |
| Vacuum permittivity | $\epsilon_0 = 8.85 \times 10^{-12}$ coulomb ² /(newton \cdot meter ²) |
| Vacuum permeability | $\mu_0 = 4\pi \times 10^{-7}$ weber/(ampere \cdot meter) |
| Universal gravitational constant | $G = 6.67 \times 10^{-11}$ meter ³ /(kilogram \cdot second ²) |
| Acceleration due to gravity | $g = 9.80$ m/s ² $= 980$ cm/s ² |
| 1 atmosphere pressure | 1 atm $= 1.0 \times 10^5$ newton/meter ² $= 1.0 \times 10^5$ pascals (Pa) |
| 1 angstrom | 1 Å $= 1 \times 10^{-10}$ meter |
| | 1 weber/m ² $= 1$ tesla $= 10^4$ gauss |

Moments of inertia about center of mass

| | |
|--------|---------------------|
| Rod | $\frac{1}{12} Ml^2$ |
| Disc | $\frac{1}{2} MR^2$ |
| Sphere | $\frac{2}{5} MR^2$ |

PHYSICS TEST

Time—170 minutes

100 Questions

Directions: Each of the questions or incomplete statements below is followed by five suggested answers or completions. Select the one that is best in each case and then fill in the corresponding space on the answer sheet.

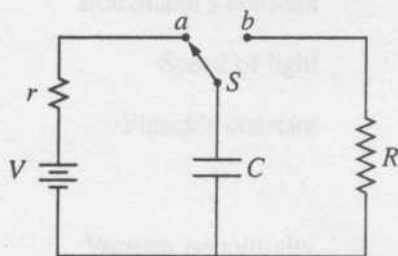


Figure 1

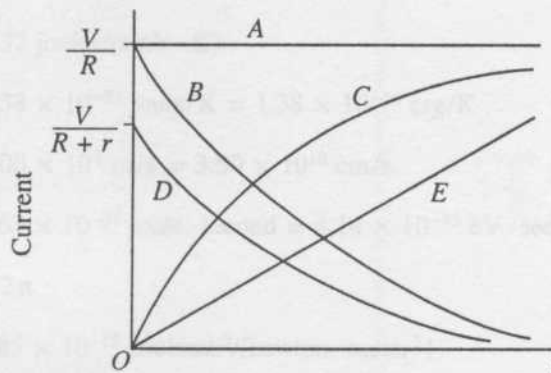
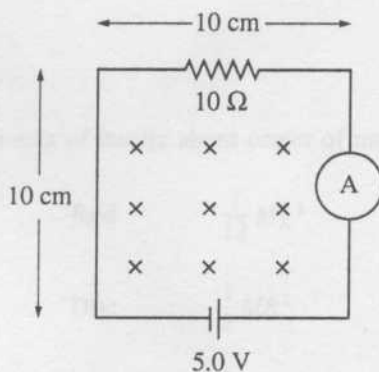


Figure 2

1. The capacitor shown in Figure 1 above is charged by connecting switch S to contact a . If switch S is thrown to contact b at time $t = 0$, which of the curves in Figure 2 above represents the magnitude of the current through the resistor R as a function of time?

- (A) A
- (B) B
- (C) C
- (D) D
- (E) E

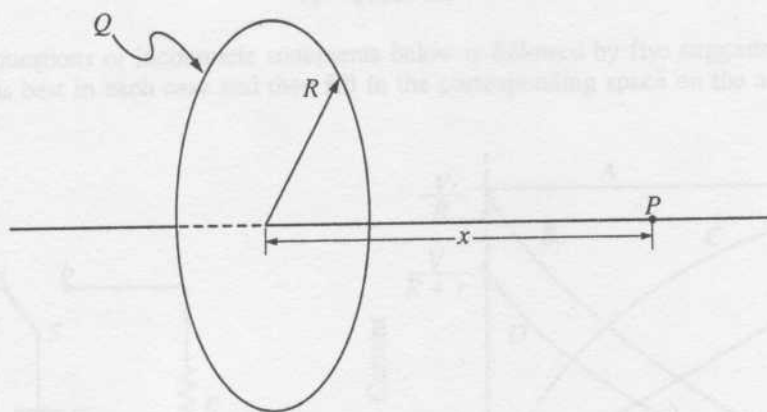


2. The circuit shown above is in a uniform magnetic field that is into the page and is decreasing in magnitude at the rate of 150 tesla/second. The ammeter reads

- (A) 0.15 A
- (B) 0.35 A
- (C) 0.50 A
- (D) 0.65 A
- (E) 0.80 A

GO ON TO THE NEXT PAGE.

Questions 3-4 refer to a thin, nonconducting ring of radius R , as shown below, which has a charge Q uniformly spread out on it.



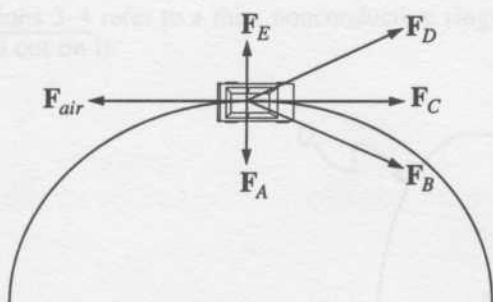
3. The electric potential at a point P , which is located on the axis of symmetry a distance x from the center of the ring, is given by

- (A) $\frac{Q}{4\pi\epsilon_0 x}$
 (B) $\frac{Q}{4\pi\epsilon_0 \sqrt{R^2 + x^2}}$
 (C) $\frac{Qx}{4\pi\epsilon_0 (R^2 + x^2)}$
 (D) $\frac{Qx}{4\pi\epsilon_0 (R^2 + x^2)^{3/2}}$
 (E) $\frac{QR}{4\pi\epsilon_0 (R^2 + x^2)}$

4. A small particle of mass m and charge $-q$ is placed at point P and released. If $R \gg x$, the particle will undergo oscillations along the axis of symmetry with an angular frequency that is equal to

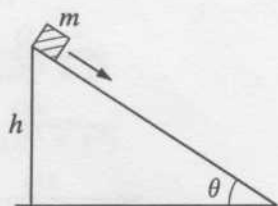
- (A) $\sqrt{\frac{qQ}{4\pi\epsilon_0 m R^3}}$
 (B) $\sqrt{\frac{qQx}{4\pi\epsilon_0 m R^4}}$
 (C) $\frac{qQ}{4\pi\epsilon_0 m R^3}$
 (D) $\frac{qQx}{4\pi\epsilon_0 m R^4}$
 (E) $\sqrt{\frac{qQx}{4\pi\epsilon_0 m} \frac{1}{R^2 + x^2}}$

GO ON TO THE NEXT PAGE.



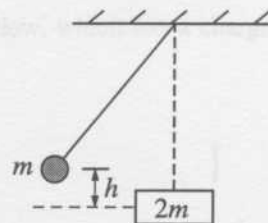
5. A car travels with constant speed on a circular road on level ground. In the diagram above, F_{air} is the force of air resistance on the car. Which of the other forces shown best represents the horizontal force of the road on the car's tires?

(A) F_A
 (B) F_B
 (C) F_C
 (D) F_D
 (E) F_E



6. A block of mass m sliding down an incline at constant speed is initially at a height h above the ground, as shown in the figure above. The coefficient of kinetic friction between the mass and the incline is μ . If the mass continues to slide down the incline at a constant speed, how much energy is dissipated by friction by the time the mass reaches the bottom of the incline?

(A) mgh/μ
 (B) mgh
 (C) $\mu mgh/\sin\theta$
 (D) $mgh\sin\theta$
 (E) 0



7. As shown above, a ball of mass m , suspended on the end of a wire, is released from height h and collides elastically, when it is at its lowest point, with a block of mass $2m$ at rest on a frictionless surface. After the collision, the ball rises to a final height equal to

(A) $1/9 h$
 (B) $1/8 h$
 (C) $1/3 h$
 (D) $1/2 h$
 (E) $2/3 h$

8. A particle of mass m undergoes harmonic oscillation with period T_0 . A force f proportional to the speed v of the particle, $f = -bv$, is introduced. If the particle continues to oscillate, the period with f acting is

(A) larger than T_0
 (B) smaller than T_0
 (C) independent of b
 (D) dependent linearly on b
 (E) constantly changing

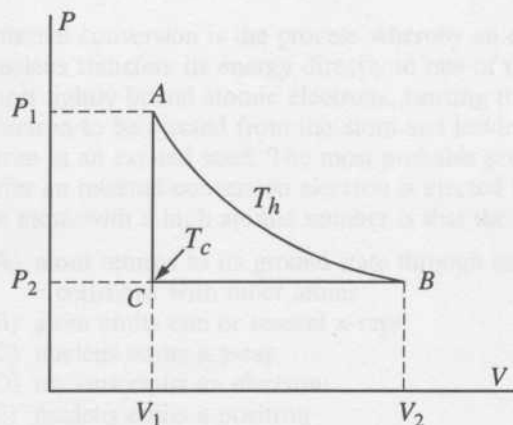
9. In the spectrum of hydrogen, what is the ratio of the longest wavelength in the Lyman series ($n_f = 1$) to the longest wavelength in the Balmer series ($n_f = 2$)?

(A) $5/27$
 (B) $1/3$
 (C) $4/9$
 (D) $3/2$
 (E) 3

GO ON TO THE NEXT PAGE.

10. Internal conversion is the process whereby an excited nucleus transfers its energy directly to one of the most tightly bound atomic electrons, causing the electron to be ejected from the atom and leaving the atom in an excited state. The most probable process after an internal conversion electron is ejected from an atom with a high atomic number is that the
- atom returns to its ground state through inelastic collisions with other atoms
 - atom emits one or several x-rays
 - nucleus emits a γ -ray
 - nucleus emits an electron
 - nucleus emits a positron
11. A beam of neutral hydrogen atoms in their ground state is moving into the plane of this page and passes through a region of a strong inhomogeneous magnetic field that is directed upward in the plane of the page. After the beam passes through this field, a detector would find that it has been
- deflected upward
 - deflected to the right
 - undeviated
 - split vertically into two beams
 - split horizontally into three beams
12. The ground-state energy of positronium is most nearly equal to
- 27.2 eV
 - 13.6 eV
 - 6.8 eV
 - 3.4 eV
 - 13.6 eV
13. A 100-watt electric heating element is placed in a pan containing one liter of water. Although the heating element is on for a long time, the water, though close to boiling, does not boil. When the heating element is removed, approximately how long will it take the water to cool by 1°C ? (Assume that the specific heat for water is 4.2 kilojoules/kilogram $^\circ\text{C}$.)
- 20 s
 - 40 s
 - 60 s
 - 130 s
 - 200 s
14. Two identical 1.0-kilogram blocks of copper metal, one initially at a temperature $T_1 = 0^\circ\text{C}$ and the other initially at a temperature $T_2 = 100^\circ\text{C}$, are enclosed in a perfectly insulating container. The two blocks are initially separated. When the blocks are placed in contact, they come to equilibrium at a final temperature T_f . The amount of heat exchanged between the two blocks in this process is equal to which of the following? (The specific heat of copper metal is equal to 0.1 kilocalorie/kilogram $^\circ\text{K}$.)
- 50 kcal
 - 25 kcal
 - 10 kcal
 - 5 kcal
 - 1 kcal

GO ON TO THE NEXT PAGE.

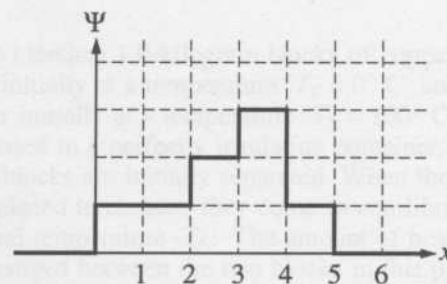


15. Suppose one mole of an ideal gas undergoes the reversible cycle $ABCA$ shown in the P - V diagram above, where AB is an isotherm. The molar heat capacities are C_p at constant pressure and C_v at constant volume. The net heat added to the gas during the cycle is equal to

- (A) $RT_h V_2/V_1$
- (B) $-C_p(T_h - T_c)$
- (C) $C_v(T_h - T_c)$
- (D) $RT_h \ln V_2/V_1 - C_p(T_h - T_c)$
- (E) $RT_h \ln V_2/V_1 - R(T_h - T_c)$

16. The mean free path for the molecules of a gas is approximately given by $\frac{1}{\eta\sigma}$, where η is the number density and σ is the collision cross section. The mean free path for air molecules at room conditions is approximately

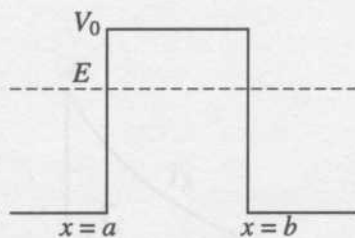
- (A) 10^{-4} m
- (B) 10^{-7} m
- (C) 10^{-10} m
- (D) 10^{-13} m
- (E) 10^{-16} m



17. The wave function for a particle constrained to move in one dimension is shown in the graph above ($\Psi = 0$ for $x \leq 0$ and $x \geq 5$). What is the probability that the particle would be found between $x = 2$ and $x = 4$?

- (A) $17/64$
- (B) $25/64$
- (C) $5/8$
- (D) $\sqrt{5/8}$
- (E) $13/16$

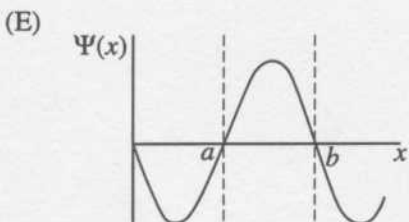
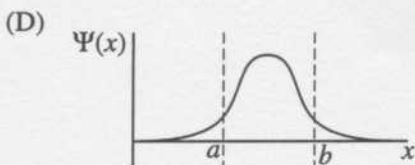
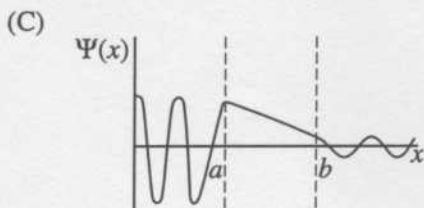
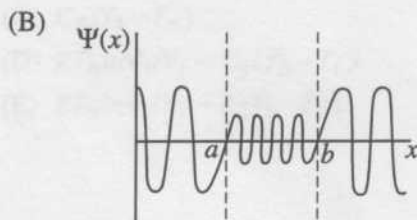
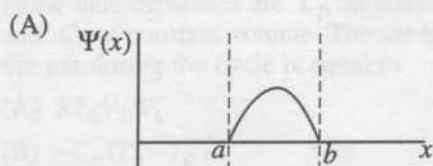
GO ON TO THE NEXT PAGE.



18. Consider a potential of the form

$$\begin{aligned} V(x) &= 0, & x \leq a \\ V(x) &= V_0, & a < x < b \\ V(x) &= 0, & x \geq b \end{aligned}$$

as shown in the figure above. Which of the following wave functions is possible for a particle incident from the left with energy $E < V_0$?



19. When alpha particles are directed onto atoms in a thin metal foil, some make very close collisions with the nuclei of the atoms and are scattered at large angles. If an alpha particle with an initial kinetic energy of 5 MeV happens to be scattered through an angle of 180° , which of the following must have been its distance of closest approach to the scattering nucleus? (Assume that the metal foil is made of silver, with $Z = 50$.)

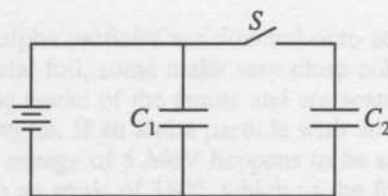
- (A) 1.22×10^{-13} m
(B) 2.9×10^{-14} m
(C) 1.0×10^{-12} m
(D) 3.0×10^{-8} m
(E) 1.7×10^{-7} m

20. A helium atom, mass $4u$, travels with nonrelativistic speed v normal to the surface of a certain material, makes an elastic collision with an (essentially free) surface atom, and leaves in the opposite direction with speed $0.6v$. The atom on the surface must be an atom of

- (A) hydrogen, mass $1u$
(B) helium, mass $4u$
(C) carbon, mass $12u$
(D) oxygen, mass $16u$
(E) silicon, mass $28u$

GO ON TO THE NEXT PAGE.

21. The period of a physical pendulum is $2\pi\sqrt{I/mgd}$, where I is the moment of inertia about the pivot point and d is the distance from the pivot to the center of mass. A circular hoop hangs from a nail on a barn wall. The mass of the hoop is 3 kilograms and its radius is 20 centimeters. If it is displaced slightly by a passing breeze, what is the period of the resulting oscillations?
- (A) 0.63 s
(B) 1.0 s
(C) 1.3 s
(D) 1.8 s
(E) 2.1 s
22. The curvature of Mars is such that its surface drops a vertical distance of 2.0 meters for every 3600 meters tangent to the surface. In addition, the gravitational acceleration near its surface is 0.4 times that near the surface of Earth. What is the speed a golf ball would need to orbit Mars near the surface, ignoring the effects of air resistance?
- (A) 0.9 km/s
(B) 1.8 km/s
(C) 3.6 km/s
(D) 4.5 km/s
(E) 5.4 km/s
23. Suppose that the gravitational force law between two massive objects were $F_{12} = \hat{r}_{12} G m_1 m_2 / r_{12}^{2+\epsilon}$, where ϵ is a small positive number. Which of the following statements would be FALSE?
- (A) The total mechanical energy of the planet-Sun system would be conserved.
(B) The angular momentum of a single planet moving about the Sun would be conserved.
(C) The periods of planets in circular orbits would be proportional to the $(3 + \epsilon)/2$ power of their respective orbital radii.
(D) A single planet could move in a stationary noncircular elliptical orbit about the Sun.
(E) A single planet could move in a stationary circular orbit about the Sun.
24. Two identical conducting spheres, A and B , carry equal charge. They are initially separated by a distance much larger than their diameters, and the force between them is F . A third identical conducting sphere, C , is uncharged. Sphere C is first touched to A , then to B , and then removed. As a result, the force between A and B is equal to
- (A) 0
(B) $F/16$
(C) $F/4$
(D) $3F/8$
(E) $F/2$

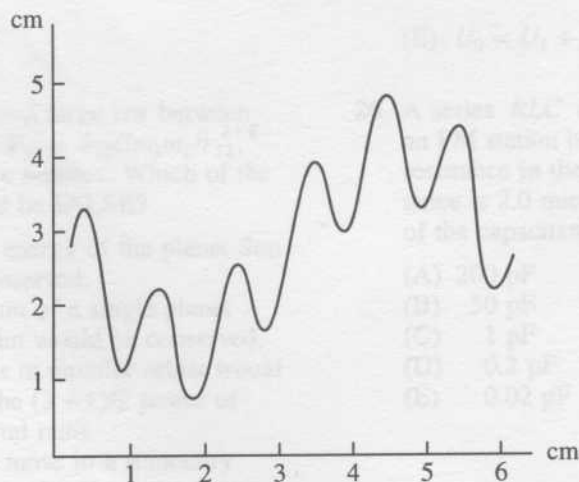


25. Two real capacitors of equal capacitance ($C_1 = C_2$) are shown in the figure above. Initially, while the switch S is open, one of the capacitors is uncharged and the other carries charge Q_0 . The energy stored in the charged capacitor is U_0 . Sometime after the switch is closed, the capacitors C_1 and C_2 carry charges Q_1 and Q_2 , respectively; the voltages across the capacitors are V_1 and V_2 ; and the energies stored in the capacitors are U_1 and U_2 . Which of the following statements is INCORRECT?
- (A) $Q_0 = \frac{1}{2}(Q_1 + Q_2)$
(B) $Q_1 = Q_2$
(C) $V_1 = V_2$
(D) $U_1 = U_2$
(E) $U_0 = U_1 + U_2$
26. A series RLC circuit is used in a radio to tune to an FM station broadcasting at 103.7 MHz. The resistance in the circuit is 10 ohms and the inductance is 2.0 microhenries. What is the best estimate of the capacitance that should be used?
- (A) 200 pF
(B) 50 pF
(C) 1 pF
(D) 0.2 pF
(E) 0.02 pF

GO ON TO THE NEXT PAGE.

27. In laboratory experiments, graphs are employed to determine how one measured variable depends on another. These graphs generally fall into three categories: linear, semilog (logarithmic *versus* linear), and log-log. Which type of graph listed in the third column below would NOT be the best for plotting data to test the relationship given in the first and second columns?

| Relation | Variables Plotted | Type of Graph |
|---------------------------------------|--|---------------|
| (A) $dN/dt \propto e^{-2t}$ | Activity vs. time for a radioactive isotope | Semilog |
| (B) $eV_s = hf - W$ | Stopping potential vs. frequency for the photoelectric effect | Linear |
| (C) $s \propto t^2$ | Distance vs. time for an object undergoing constant acceleration | Log-log |
| (D) $V_{out}/V_{in} \propto 1/\omega$ | Gain vs. frequency for a low-pass filter | Linear |
| (E) $P \propto T^4$ | Power radiated vs. temperature for blackbody radiation | Log-log |

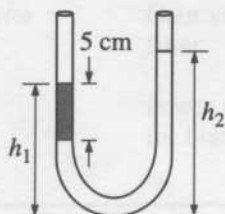


28. The figure above represents the trace on the screen of a cathode ray oscilloscope. The screen is graduated in centimeters. The spot on the screen moves horizontally with a constant speed of 0.5 centimeter/millisecond, and the vertical scale is 2 volts/centimeter. The signal is a superposition of two oscillations. Which of the following are most nearly the observed amplitude and frequency of these two oscillations?

| Oscillation 1 | Oscillation 2 |
|-----------------|---------------|
| (A) 5V, 250Hz | 2.5V, 1000Hz |
| (B) 1.5V, 250Hz | 3V, 1500Hz |
| (C) 5V, 6Hz | 2V, 2Hz |
| (D) 2.5V, 83Hz | 1.25V, 500Hz |
| (E) 6.14V, 98Hz | 1.35V, 257Hz |

29. The characteristic distance at which quantum gravitational effects are significant, the Planck length, can be determined from a suitable combination of the physical constants G , \hbar , and c . Which of the following correctly gives the Planck length?

(A) $G\hbar c$
 (B) $G\hbar^2 c^3$
 (C) $G^2 \hbar c$
 (D) $G^{\frac{1}{2}} \hbar^2 c$
 (E) $(G\hbar/c^3)^{\frac{1}{2}}$



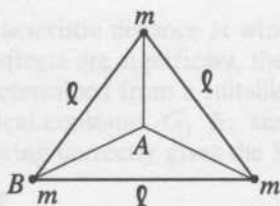
30. An open-ended U-tube of uniform cross-sectional area contains water (density $1.0 \text{ gram/centimeter}^3$) standing initially 20 centimeters from the bottom in each arm. An immiscible liquid of density $4.0 \text{ grams/centimeter}^3$ is added to one arm until a layer 5 centimeters high forms, as shown in the figure above. What is the ratio h_2/h_1 of the heights of the liquid in the two arms?

(A) $3/1$
 (B) $5/2$
 (C) $2/1$
 (D) $3/2$
 (E) $1/1$

31. A sphere of mass m is released from rest in a stationary viscous medium. In addition to the gravitational force of magnitude mg , the sphere experiences a retarding force of magnitude bv , where v is the speed of the sphere and b is a constant. Assume that the buoyant force is negligible. Which of the following statements about the sphere is correct?

(A) Its kinetic energy decreases due to the retarding force.
 (B) Its kinetic energy increases to a maximum, then decreases to zero due to the retarding force.
 (C) Its speed increases to a maximum, then decreases back to a final terminal speed.
 (D) Its speed increases monotonically, approaching a terminal speed that depends on b but not on m .
 (E) Its speed increases monotonically, approaching a terminal speed that depends on both b and m .

GO ON TO THE NEXT PAGE.



32. Three equal masses m are rigidly connected to each other by massless rods of length l forming an equilateral triangle, as shown above. The assembly is to be given an angular velocity ω about an axis perpendicular to the triangle. For fixed ω , the ratio of the kinetic energy of the assembly for an axis through B compared with that for an axis through A is equal to
- (A) 3
(B) 2
(C) 1
(D) $1/2$
(E) $1/3$
33. A diatomic molecule is initially in the state $\Psi(\Theta, \Phi) = (5Y_1^1 + 3Y_5^1 + 2Y_5^{-1})/(38)^{1/2}$, where Y_l^m is a spherical harmonic. If measurements are made of the total angular momentum quantum number l and of the azimuthal angular momentum quantum number m , what is the probability of obtaining the result $l = 5$?
- (A) $36/1444$
(B) $9/38$
(C) $13/38$
(D) $5/(38)^{1/2}$
(E) $34/38$
34. When the beta-decay of ^{60}Co nuclei is observed at low temperatures in a magnetic field that aligns the spins of the nuclei, it is found that the electrons are emitted preferentially in a direction opposite to the ^{60}Co spin direction. Which of the following invariances is violated by this decay?
- (A) Gauge invariance
(B) Time invariance
(C) Translation invariance
(D) Reflection invariance
(E) Rotation invariance
35. The wave function for identical fermions is anti-symmetric under particle interchange. Which of the following is a consequence of this property?
- (A) Pauli exclusion principle
(B) Bohr correspondence principle
(C) Heisenberg uncertainty principle
(D) Bose-Einstein condensation
(E) Fermi's golden rule
36. A lump of clay whose rest mass is 4 kilograms is traveling at three-fifths the speed of light when it collides head-on with an identical lump going the opposite direction at the same speed. If the two lumps stick together and no energy is radiated away, what is the mass of the composite lump?
- (A) 4 kg
(B) 6.4 kg
(C) 8 kg
(D) 10 kg
(E) 13.3 kg
37. An atom moving at speed $0.3c$ emits an electron along the same direction with speed $0.6c$ in the internal rest frame of the atom. The speed of the electron in the lab frame is equal to
- (A) $0.25c$
(B) $0.51c$
(C) $0.66c$
(D) $0.76c$
(E) $0.90c$
38. What is the speed of a particle having a momentum of $5 \text{ MeV}/c$ and a total relativistic energy of 10 MeV ?
- (A) c
(B) $0.75c$
(C) $\frac{1}{\sqrt{3}}c$
(D) $\frac{1}{2}c$
(E) $\frac{1}{4}c$

GO ON TO THE NEXT PAGE.

39. Which of the following atoms has the lowest ionization potential?

- (A) ${}^2_4\text{He}$
 (B) ${}^7_{14}\text{N}$
 (C) ${}^8_{16}\text{O}$
 (D) ${}^{18}_{40}\text{Ar}$
 (E) ${}^{55}_{133}\text{Cs}$

40. If a singly ionized helium atom in an $n = 4$ state emits a photon of wavelength 470 nanometers, which of the following gives the approximate final energy level, E_f , of the atom, and the n value, n_f , of this final state?

| E_f (eV) | n_f |
|------------|-------|
| (A) -6.0 | 3 |
| (B) -6.0 | 2 |
| (C) -14 | 2 |
| (D) -14 | 1 |
| (E) -52 | 1 |

41. A $3p$ electron is found in the ${}^3P_{3/2}$ energy level of a hydrogen atom. Which of the following is true about the electron in this state?

- (A) It is allowed to make an electric dipole transition to the ${}^2S_{1/2}$ level.
 (B) It is allowed to make an electric dipole transition to the ${}^2P_{1/2}$ level.
 (C) It has quantum numbers $\ell = 3$, $j = 3/2$, $s = 1/2$.
 (D) It has quantum numbers $n = 3$, $j = \ell$, $s = 3/2$.
 (E) It has exactly the same energy as it would in the ${}^3D_{3/2}$ level.

42. Light of wavelength 500 nanometers is incident on sodium, with work function 2.28 electron volts. What is the maximum kinetic energy of the ejected photoelectrons?

- (A) 0.03 eV
 (B) 0.2 eV
 (C) 0.6 eV
 (D) 1.3 eV
 (E) 2.0 eV

43. The line integral of $\mathbf{u} = y\mathbf{i} - x\mathbf{j} + z\mathbf{k}$ around a circle of radius R in the xy -plane with center at the origin is equal to

- (A) 0
 (B) $2\pi R$
 (C) $2\pi R^2$
 (D) $\pi R^2/4$
 (E) $3R^3$

44. A particle of unit mass undergoes one-dimensional motion such that its velocity varies according to

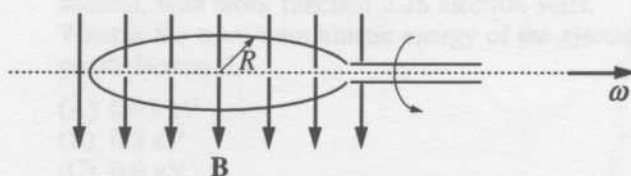
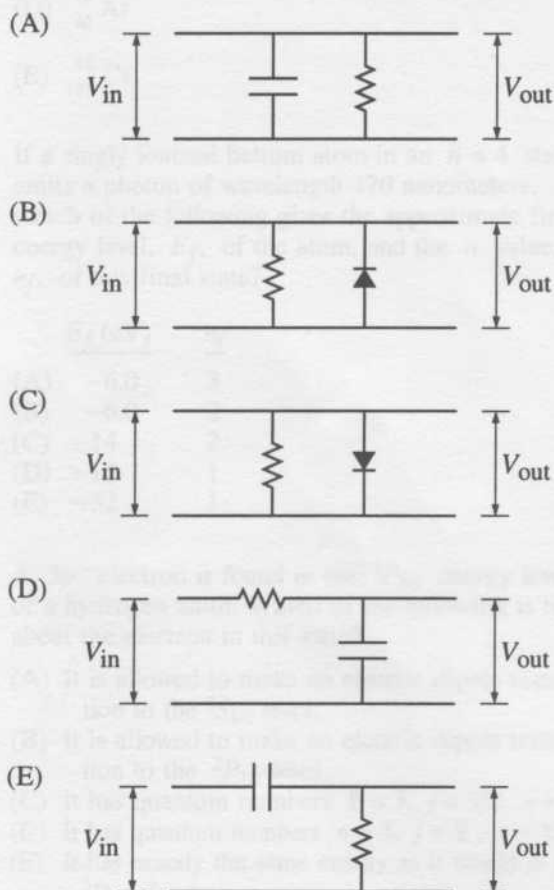
$$v(x) = \beta x^{-n},$$

where β and n are constants and x is the position of the particle. What is the acceleration of the particle as a function of x ?

- (A) $-n\beta^2 x^{-2n-1}$
 (B) $-n\beta^2 x^{-n-1}$
 (C) $-n\beta^2 x^{-n}$
 (D) $-\beta x^{-n+1}$
 (E) $-\beta x^{-2n+1}$

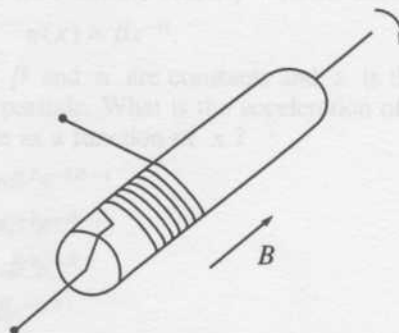
GO ON TO THE NEXT PAGE.

45. The circuits below consist of two-element combinations of capacitors, diodes, and resistors. V_{in} represents an ac-voltage with variable frequency. It is desired to build a circuit for which $V_{out} \approx V_{in}$ at high frequencies and $V_{out} \approx 0$ at low frequencies. Which of the following circuits will perform this task?



46. A circular wire loop of radius R rotates with an angular speed ω in a uniform magnetic field \mathbf{B} , as shown in the figure above. If the emf \mathcal{E} induced in the loop is $\mathcal{E}_0 \sin \omega t$, then the angular speed of the loop is

- (A) $\mathcal{E}_0 R / B$
 (B) $2\pi \mathcal{E}_0 / R$
 (C) $\mathcal{E}_0 / (B\pi R^2)$
 (D) $\mathcal{E}_0^2 / (BR^2)$
 (E) $\tan^{-1}(\mathcal{E}_0 / Bc)$



47. A wire is being wound around a rotating wooden cylinder of radius R . One end of the wire is connected to the axis of the cylinder, as shown in the figure above. The cylinder is placed in a uniform magnetic field of magnitude B parallel to its axis and rotates at N revolutions per second. What is the potential difference between the open ends of the wire?

- (A) 0
 (B) $2\pi NBR$
 (C) πNBR^2
 (D) BR^2/N
 (E) πNBR^3

GO ON TO THE NEXT PAGE.

48. The half-life of a π^+ meson at rest is 2.5×10^{-8} second. A beam of π^+ mesons is generated at a point 15 meters from a detector. Only $\frac{1}{2}$ of the π^+ mesons live to reach the detector. The speed of the π^+ mesons is
- (A) $\frac{1}{2}c$
 (B) $\sqrt{\frac{2}{5}}c$
 (C) $\frac{2}{\sqrt{5}}c$
 (D) c
 (E) $2c$
49. The infinite xy -plane is a nonconducting surface, with surface charge density σ , as measured by an observer at rest on the surface. A second observer moves with velocity $v\hat{x}$ relative to the surface, at height h above it. Which of the following expressions gives the electric field measured by this second observer?
- (A) $\frac{\sigma}{2\epsilon_0} \hat{z}$
 (B) $\frac{\sigma}{2\epsilon_0} \sqrt{1 - v^2/c^2} \hat{z}$
 (C) $\frac{\sigma}{2\epsilon_0 \sqrt{1 - v^2/c^2}} \hat{z}$
 (D) $\frac{\sigma}{2\epsilon_0} \left(\sqrt{1 - v^2/c^2} \hat{z} + v/c \hat{x} \right)$
 (E) $\frac{\sigma}{2\epsilon_0} \left(\sqrt{1 - v^2/c^2} \hat{z} - v/c \hat{y} \right)$
50. In inertial frame S , two events occur at the same instant in time and $3c \cdot \text{minutes}$ apart in space. In inertial frame S' , the same events occur at $5c \cdot \text{minutes}$ apart. What is the time interval between the events in S' ?
- (A) 0 min
 (B) 2 min
 (C) 4 min
 (D) 8 min
 (E) 16 min
51. The solution to the Schrödinger equation for a particle bound in a one-dimensional, infinitely deep potential well, indexed by quantum number n , indicates that in the middle of the well the probability density vanishes for
- (A) the ground state ($n = 1$) only
 (B) states of even n ($n = 2, 4, \dots$)
 (C) states of odd n ($n = 1, 3, \dots$)
 (D) all states ($n = 1, 2, 3, \dots$)
 (E) all states except the ground state
52. At a given instant of time, a rigid rotator is in the state $\psi(\theta, \phi) = \sqrt{3/4\pi} \sin\theta \sin\phi$, where θ is the polar angle relative to the z -axis and ϕ is the azimuthal angle. Measurement will find which of the following possible values of the z -component of the angular momentum, L_z ?
- (A) 0
 (B) $\hbar/2, -\hbar/2$
 (C) $\hbar, -\hbar$
 (D) $2\hbar, -2\hbar$
 (E) $\hbar, 0, -\hbar$
53. Positronium is the bound state of an electron and a positron. Consider only the states of zero orbital angular momentum ($\ell = 0$). The most probable decay product of any such state of positronium with spin zero (singlet) is
- (A) 0 photons
 (B) 1 photon
 (C) 2 photons
 (D) 3 photons
 (E) 4 photons

GO ON TO THE NEXT PAGE.

Questions 54-55 concern a plane electromagnetic wave that is a superposition of two independent orthogonal plane waves and can be written as the real part of $E = \hat{x}E_1 \exp(i[kz - \omega t]) + \hat{y}E_2 \exp(i[kz - \omega t + \pi])$, where k , ω , E_1 , and E_2 are real.

54. If $E_2 = E_1$, the tip of the electric field vector will describe a trajectory that, as viewed along the z -axis from positive z and looking toward the origin, is a

(A) line at 45° to the $+x$ -axis
 (B) line at 135° to the $+x$ -axis
 (C) clockwise circle
 (D) counterclockwise circle
 (E) random path

55. If the plane wave is split and recombined on a screen after the two portions, which are polarized in the x - and y -directions, have traveled an optical path difference of $2\pi/k$, the observed average intensity will be proportional to

(A) $E_1^2 + E_2^2$
 (B) $E_1^2 - E_2^2$
 (C) $(E_1 + E_2)^2$
 (D) $(E_1 - E_2)^2$
 (E) 0

56. A light source is at the bottom of a pool of water (the index of refraction of water is 1.33). At what minimum angle of incidence will a ray be totally reflected at the surface?

(A) 0°
 (B) 25°
 (C) 50°
 (D) 75°
 (E) 90°

57. Consider a single-slit diffraction pattern for a slit of width d . It is observed that for light of wavelength 400 nanometers, the angle between the first minimum and the central maximum is 4×10^{-3} radians. The value of d is

(A) 1×10^{-5} m
 (B) 5×10^{-5} m
 (C) 1×10^{-4} m
 (D) 2×10^{-4} m
 (E) 1×10^{-3} m

58. A collimated laser beam emerging from a commercial HeNe laser has a diameter of about 1 millimeter. In order to convert this beam into a well-collimated beam of diameter 10 millimeters, two convex lenses are to be used. The first lens is of focal length 1.5 centimeters and is to be mounted at the output of the laser. What is the focal length, f , of the second lens and how far from the first lens should it be placed?

| | f | Distance |
|-----|--------|----------|
| (A) | 4.5 cm | 6.0 cm |
| (B) | 10 cm | 10 cm |
| (C) | 10 cm | 11.5 cm |
| (D) | 15 cm | 15 cm |
| (E) | 15 cm | 16.5 cm |

59. The approximate number of photons in a femtosecond (10^{-15} s) pulse of 600 nanometers wavelength light from a 10-kilowatt peak-power dye laser is

(A) 10^3
 (B) 10^7
 (C) 10^{11}
 (D) 10^{15}
 (E) 10^{18}

60. The Lyman alpha spectral line of hydrogen ($\lambda = 122$ nanometers) differs by 1.8×10^{-12} meter in spectra taken at opposite ends of the Sun's equator. What is the speed of a particle on the equator due to the Sun's rotation, in kilometers per second?

(A) 0.22
 (B) 2.2
 (C) 22
 (D) 220
 (E) 2200

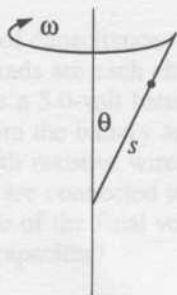
GO ON TO THE NEXT PAGE.

61. A sphere of radius R carries charge density proportional to the square of the distance from the center: $\rho = Ar^2$, where A is a positive constant. At a distance of $R/2$ from the center, the magnitude of the electric field is
- (A) $A/4\pi\epsilon_0$
 (B) $AR^3/40\epsilon_0$
 (C) $AR^3/24\epsilon_0$
 (D) $AR^3/5\epsilon_0$
 (E) $AR^3/3\epsilon_0$
62. Two capacitors of capacitances 1.0 microfarad and 2.0 microfarads are each charged by being connected across a 5.0-volt battery. They are disconnected from the battery and then connected to each other with resistive wires so that plates of opposite charge are connected together. What will be the magnitude of the final voltage across the 2.0-microfarad capacitor?
- (A) 0 V
 (B) 0.6 V
 (C) 1.7 V
 (D) 3.3 V
 (E) 5.0 V
63. According to the Standard Model of elementary particles, which of the following is NOT a composite object?
- (A) Muon
 (B) Pi-meson
 (C) Neutron
 (D) Deuteron
 (E) Alpha particle
64. The binding energy of a heavy nucleus is about 7 million electron volts per nucleon, whereas the binding energy of a medium-weight nucleus is about 8 million electron volts per nucleon. Therefore, the total kinetic energy liberated when a heavy nucleus undergoes symmetric fission is most nearly
- (A) 1876 MeV
 (B) 938 MeV
 (C) 200 MeV
 (D) 8 MeV
 (E) 7 MeV
65. A man of mass m on an initially stationary boat gets off the boat by leaping to the left in an exactly horizontal direction. Immediately after the leap, the boat, of mass M , is observed to be moving to the right at speed v . How much work did the man do during the leap (both on his own body and on the boat)?
- (A) $\frac{1}{2} Mv^2$
 (B) $\frac{1}{2} mv^2$
 (C) $\frac{1}{2} (M + m) v^2$
 (D) $\frac{1}{2} \left(M + \frac{M^2}{m} \right) v^2$
 (E) $\frac{1}{2} \left(\frac{Mm}{M + m} \right) v^2$
66. When it is about the same distance from the Sun as is Jupiter, a spacecraft on a mission to the outer planets has a speed that is 1.5 times the speed of Jupiter in its orbit. Which of the following describes the orbit of the spacecraft about the Sun?
- (A) Spiral
 (B) Circle
 (C) Ellipse
 (D) Parabola
 (E) Hyperbola

GO ON TO THE NEXT PAGE.

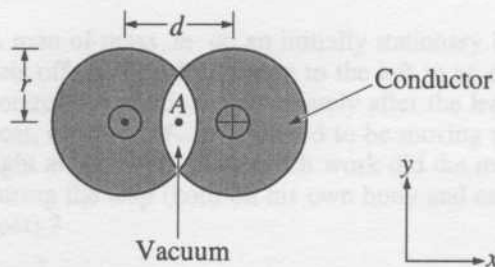
67. A black hole is an object whose gravitational field is so strong that even light cannot escape. To what approximate radius would Earth (mass = 5.98×10^{24} kilograms) have to be compressed in order to become a black hole?

(A) 1 nm
(B) 1 μm
(C) 1 cm
(D) 100 m
(E) 10 km



68. A bead is constrained to slide on a frictionless rod that is fixed at an angle θ with a vertical axis and is rotating with angular frequency ω about the axis, as shown above. Taking the distance s along the rod as the variable, the Lagrangian for the bead is equal to

(A) $\frac{1}{2} m \dot{s}^2 - mgs \cos \theta$
(B) $\frac{1}{2} m \dot{s}^2 + \frac{1}{2} m (\omega s)^2 - mgs$
(C) $\frac{1}{2} m \dot{s}^2 + \frac{1}{2} m (\omega s \cos \theta)^2 + mgs \cos \theta$
(D) $\frac{1}{2} m (\dot{s} \sin \theta)^2 - mgs \cos \theta$
(E) $\frac{1}{2} m \dot{s}^2 + \frac{1}{2} m (\omega s \sin \theta)^2 - mgs \cos \theta$



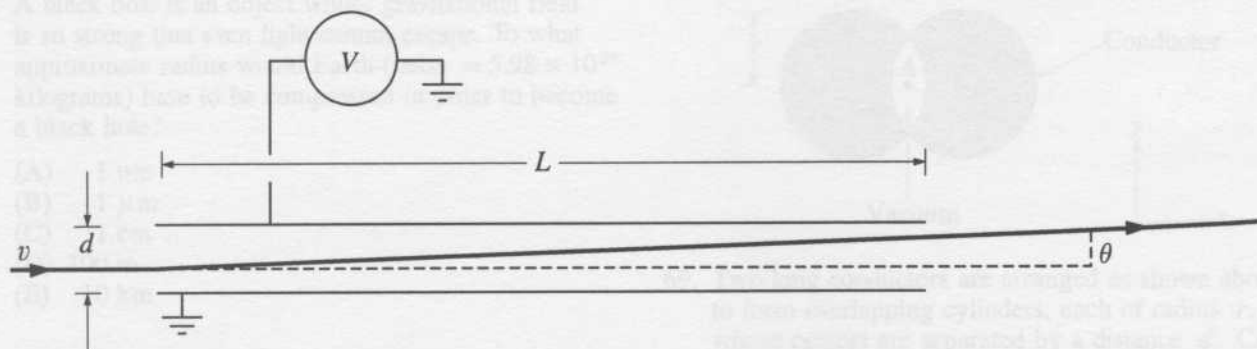
69. Two long conductors are arranged as shown above to form overlapping cylinders, each of radius r , whose centers are separated by a distance d . Current of density J flows into the plane of the page along the shaded part of one conductor and an equal current flows out of the plane of the page along the shaded portion of the other, as shown. What are the magnitude and direction of the magnetic field at point A ?

(A) $(\mu_0/2\pi)\pi dJ$, in the $+y$ -direction
(B) $(\mu_0/2\pi)d^2J/r$, in the $+y$ -direction
(C) $(\mu_0/2\pi)4d^2J/r$, in the $-y$ -direction
(D) $(\mu_0/2\pi)Jr^2/d$, in the $-y$ -direction
(E) There is no magnetic field at A .

70. A charged particle, A , moving at a speed much less than c , decelerates uniformly. A second particle, B , has one-half the mass, twice the charge, three times the velocity, and four times the acceleration of particle A . According to classical electrodynamics, the ratio P_B/P_A of the powers radiated is

(A) 16
(B) 32
(C) 48
(D) 64
(E) 72

GO ON TO THE NEXT PAGE.



71. The figure above shows the trajectory of a particle that is deflected as it moves through the uniform electric field between parallel plates. There is potential difference V and distance d between the plates, and they have length L . The particle (mass m , charge q) has nonrelativistic speed v before it enters the field, and its direction at this time is perpendicular to the field. For small deflections, which of the following expressions is the best approximation to the deflection angle θ ?

- (A) $\arctan \left((L/d)(Vq/mv^2) \right)$
- (B) $\arctan \left((L/d)(Vq/mv^2)^2 \right)$
- (C) $\arctan \left((L/d)^2(Vq/mv^2) \right)$
- (D) $\arctan \left((L/d)(2Vq/mv^2)^{1/2} \right)$
- (E) $\arctan \left((L/d)^{1/2}(2Vq/mv^2) \right)$

72. In a voltage amplifier, which of the following is NOT usually a result of introducing negative feedback?

- (A) Increased amplification
- (B) Increased bandwidth
- (C) Increased stability
- (D) Decreased distortion
- (E) Decreased voltage gain

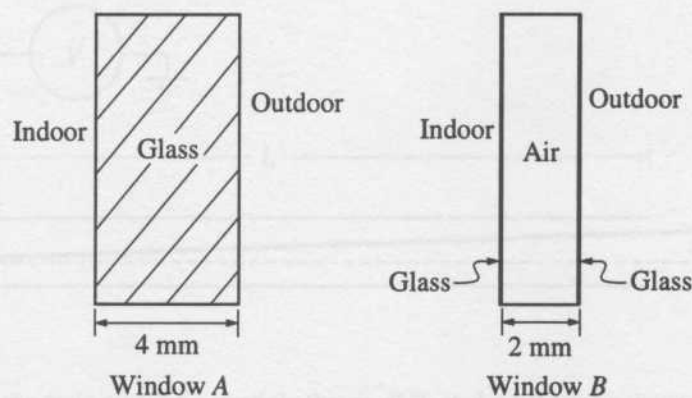
73. The adiabatic expansion of an ideal gas is described by the equation $PV^\gamma = C$, where γ and C are constants. The work done by the gas in expanding adiabatically from the state (V_i, P_i) to (V_f, P_f) is equal to

- (A) $P_f V_f$
- (B) $\frac{(P_i + P_f)}{2} (V_f - V_i)$
- (C) $\frac{P_f V_f - P_i V_i}{1 - \gamma}$
- (D) $\frac{P_i (V_f^{1+\gamma} - V_i^{1+\gamma})}{1 + \gamma}$
- (E) $\frac{P_f (V_f^{1-\gamma} - V_i^{1-\gamma})}{1 + \gamma}$

74. A body of mass m with specific heat C at temperature 500 K is brought into contact with an identical body at temperature 100 K, and the two are isolated from their surroundings. The change in entropy of the system is equal to

- (A) $(4/3)mC$
- (B) $mC \ln(9/5)$
- (C) $mC \ln(3)$
- (D) $-mC \ln(5/3)$
- (E) 0

GO ON TO THE NEXT PAGE.



75. Window A is a pane of glass 4 millimeters thick, as shown above. Window B is a sandwich consisting of two extremely thin layers of glass separated by an air gap 2 millimeters thick, as shown above. If the thermal conductivities of glass and air are 0.8 watt/meter $^{\circ}\text{C}$ and 0.025 watt/meter $^{\circ}\text{C}$, respectively, then the ratio of the heat flow through window A to the heat flow through window B is

(A) 2
(B) 4
(C) 8
(D) 16
(E) 32

76. A Gaussian wave packet travels through free space. Which of the following statements about the wave packet are correct for all such wave packets?

- I. The average momentum of the wave packet is zero.
- II. The width of the wave packet increases with time, as $t \rightarrow \infty$.
- III. The amplitude of the wave packet remains constant with time.
- IV. The narrower the wave packet is in momentum space, the wider it is in coordinate space.

(A) I and III only
(B) II and IV only
(C) I, II, and IV only
(D) II, III, and IV only
(E) I, II, III, and IV

GO ON TO THE NEXT PAGE.

77. Two ions, 1 and 2, at fixed separation, with spin angular momentum operators S_1 and S_2 , have the interaction Hamiltonian $H = -J S_1 \cdot S_2$, where $J > 0$. The values of S_1^2 and S_2^2 are fixed at $S_1(S_1 + 1)$ and $S_2(S_2 + 1)$, respectively. Which of the following is the energy of the ground state of the system?

(A) 0

(B) $-JS_1S_2$

(C) $-J[S_1(S_1 + 1) - S_2(S_2 + 1)]$

(D) $-(J/2)[(S_1 + S_2)(S_1 + S_2 + 1) - S_1(S_1 + 1) - S_2(S_2 + 1)]$

(E) $-\frac{J}{2} \left[\frac{S_1(S_1 + 1) + S_2(S_2 + 1)}{(S_1 + S_2)(S_1 + S_2 + 1)} \right]$

78. In an n -type semiconductor, which of the following is true of impurity atoms?

- (A) They accept electrons from the filled valence band into empty energy levels just above the valence band.
 (B) They accept electrons from the filled valence band into empty energy levels just below the valence band.
 (C) They accept electrons from the conduction band into empty energy levels just below the conduction band.
 (D) They donate electrons to the filled valence band from donor levels just above the valence band.
 (E) They donate electrons to the conduction band from filled donor levels just below the conduction band.

79. For an ideal diatomic gas in thermal equilibrium, the ratio of the molar heat capacity at constant volume at very high temperatures to that at very low temperatures is equal to

- (A) 1
 (B) $5/3$
 (C) 2
 (D) $7/3$
 (E) 3



80. A string consists of two parts attached at $x = 0$. The right part of the string ($x > 0$) has mass μ_r per unit length and the left part of the string ($x < 0$) has mass μ_l per unit length. The string tension is T . If a wave of unit amplitude travels along the left part of the string, as shown in the figure above, what is the amplitude of the wave that is transmitted to the right part of the string?

(A) 1

(B) $\frac{2}{1 + \sqrt{\mu_l/\mu_r}}$

(C) $\frac{2\sqrt{\mu_l/\mu_r}}{1 + \sqrt{\mu_l/\mu_r}}$

(D) $\frac{\sqrt{\mu_l/\mu_r} - 1}{\sqrt{\mu_l/\mu_r} + 1}$

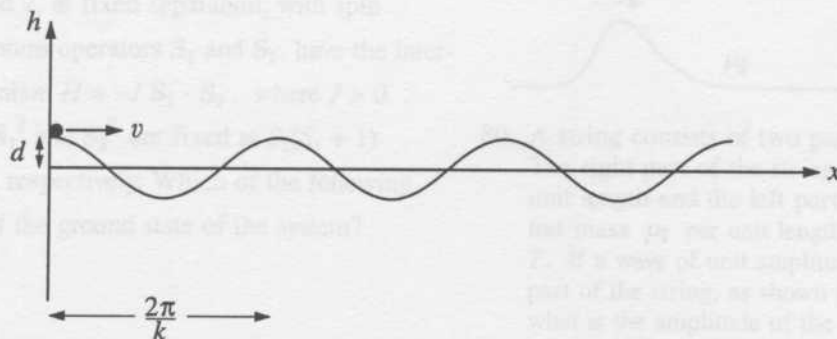
(E) 0

81. A piano tuner who wishes to tune the note D_2 corresponding to a frequency of 73.416 hertz has tuned A_4 to a frequency of 440.000 hertz. Which harmonic of D_2 (counting the fundamental as the first harmonic) will give the lowest number of beats per second, and approximately how many beats will this be when the two notes are tuned properly?

| | Harmonic | Number of Beats |
|-----|----------|-----------------|
| (A) | 6 | 5 |
| (B) | 6 | 0.5 |
| (C) | 5 | 0.1 |
| (D) | 3 | 0.372 |
| (E) | 2 | 4.5 |

82. Consider two horizontal glass plates with a thin film of air between them. For what values of the thickness of the film of air will the film, as seen by reflected light, appear bright if it is illuminated normally from above by blue light of wavelength 488 nanometers?

- (A) 0, 122 nm, 244 nm
 (B) 0, 122 nm, 366 nm
 (C) 0, 244 nm, 488 nm
 (D) 122 nm, 244 nm, 366 nm
 (E) 122 nm, 366 nm, 610 nm

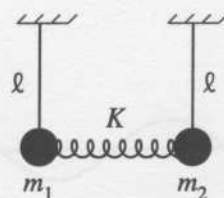


83. Consider a particle moving without friction on a rippled surface, as shown above. Gravity acts down in the negative h direction. The elevation $h(x)$ of the surface is given by $h(x) = d \cos(kx)$. If the particle starts at $x = 0$ with a speed v in the x direction, for what values of v will the particle stay on the surface at all times?

- (A) $v \leq \sqrt{gd}$
 (B) $v \leq \sqrt{\frac{g}{k}}$
 (C) $v \leq \sqrt{gkd^2}$
 (D) $v \leq \sqrt{\frac{g}{k^2d}}$
 (E) $v > 0$

GO ON TO THE NEXT PAGE.

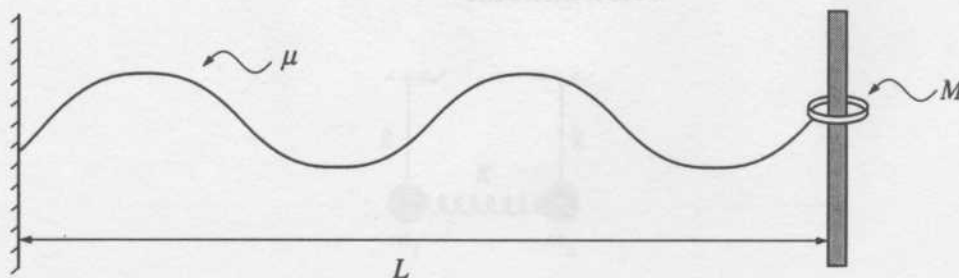
| Harmonic | Number of Beats |
|----------|-----------------|
| (A) 4 | 5 |
| (B) 6 | 0.5 |
| (C) 3 | 0.1 |
| (D) 3 | 0.372 |
| (E) 2 | 4.5 |



84. Two pendulums are attached to a massless spring, as shown above. The arms of the pendulums are of identical lengths l , but the pendulum balls have unequal masses m_1 and m_2 . The initial distance between the masses is the equilibrium length of the spring, which has spring constant K . What is the highest normal mode frequency of this system?

- (A) $\sqrt{g/l}$
- (B) $\sqrt{\frac{K}{m_1 + m_2}}$
- (C) $\sqrt{\frac{K}{m_1} + \frac{K}{m_2}}$
- (D) $\sqrt{\frac{g}{l} + \frac{K}{m_1} + \frac{K}{m_2}}$
- (E) $\sqrt{\frac{2g}{l} + \frac{K}{m_1 + m_2}}$

GO ON TO THE NEXT PAGE.



85. Small-amplitude standing waves of wavelength λ occur on a string with tension T , mass per unit length μ , and length L . One end of the string is fixed and the other end is attached to a ring of mass M that slides on a frictionless rod, as shown in the figure above. When gravity is neglected, which of the following conditions correctly determines the wavelength? (You might want to consider the limiting cases $M \rightarrow 0$ and $M \rightarrow \infty$.)

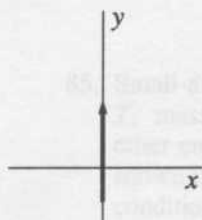
- (A) $\mu/M = \frac{2\pi}{\lambda} \cot \frac{2\pi L}{\lambda}$
- (B) $\mu/M = \frac{2\pi}{\lambda} \tan \frac{2\pi L}{\lambda}$
- (C) $\mu/M = \frac{2\pi}{\lambda} \sin \frac{2\pi L}{\lambda}$
- (D) $\lambda = 2L/n$, $n = 1, 2, 3, \dots$
- (E) $\lambda = 2L/(n + \frac{1}{2})$, $n = 1, 2, 3, \dots$

GO ON TO THE NEXT PAGE.

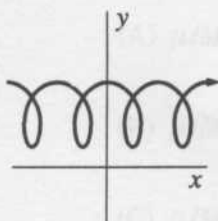
GO ON TO THE NEXT PAGE.

86. A positively charged particle is moving in the xy -plane in a region where there is a non-zero uniform magnetic field B in the $+z$ -direction and a non-zero uniform electric field E in the $+y$ -direction. Which of the following is a possible trajectory for the particle?

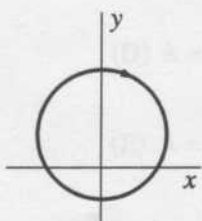
(A)



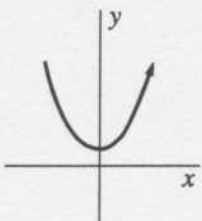
(B)



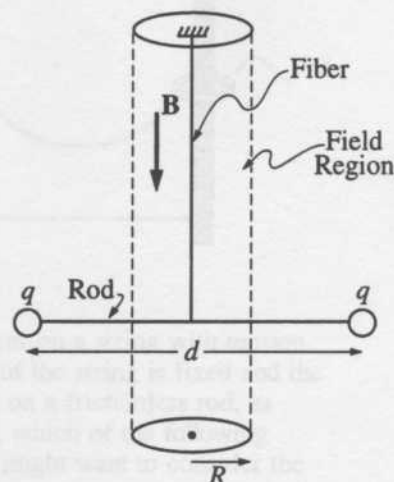
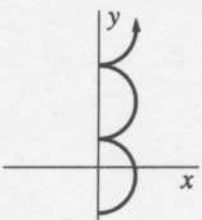
(C)



(D)



(E)



87. Two small pith balls, each carrying a charge q , are attached to the ends of a light rod of length d , which is suspended from the ceiling by a thin torsion-free fiber, as shown in the figure above. There is a uniform magnetic field B , pointing straight down, in the cylindrical region of radius R around the fiber. The system is initially at rest. If the magnetic field is turned off, which of the following describes what happens to the system?

(A) It rotates with angular momentum qBR^2 .

(B) It rotates with angular momentum $\frac{1}{4}qBd^2$.

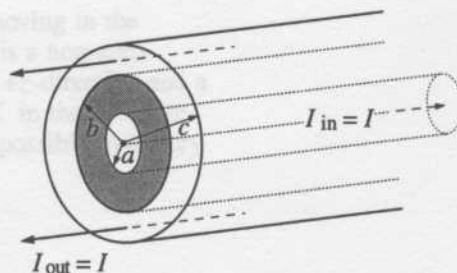
(C) It rotates with angular momentum $\frac{1}{2}qBRd$.

(D) It does not rotate because to do so would violate conservation of angular momentum.

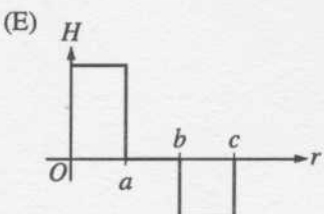
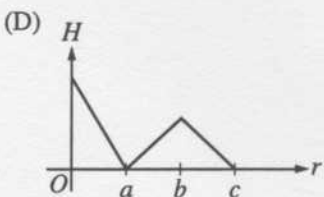
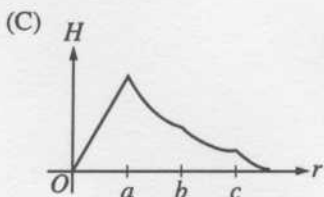
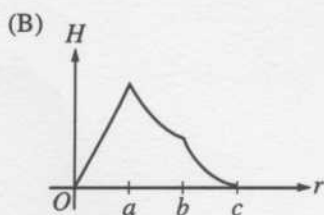
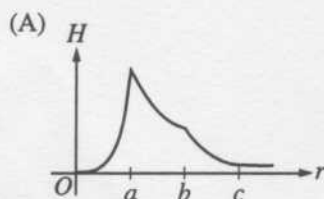
(E) It does not move because magnetic forces do no work.

GO ON TO THE NEXT PAGE.

85. A positively charged particle is moving in the xy -plane in a region where there is a uniform magnetic field B in the z -direction and a non-zero uniform electric field E in the x -direction. Which of the following is a possible path for the particle?

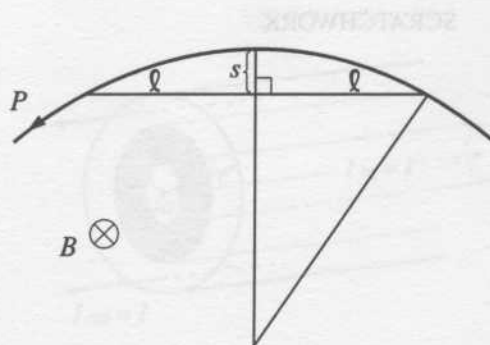


88. A coaxial cable has the cross section shown in the figure above. The shaded region is insulated. The regions in which $r < a$ and $b < r < c$ are conducting. A uniform dc current density of total current I flows along the inner part of the cable ($r < a$) and returns along the outer part of the cable ($b < r < c$) in the directions shown. The radial dependence of the magnitude of the magnetic field, H , is shown by which of the following?



GO ON TO THE NEXT PAGE

GO ON TO THE NEXT PAGE.



88. A coaxial cable has the cross section shown in the figure above. The shaded region is insulated. The region in which $r < a$ and $b < r < c$ is

89. A particle with charge q and momentum p is moving in the horizontal plane under the action of a uniform vertical magnetic field of magnitude B . Measurements are made of the particle's trajectory to determine the "sagitta" s and half-chord length ℓ , as shown in the figure above. Which of the following expressions gives the particle's momentum in terms of q , B , s , and ℓ ? (Assume $s \ll \ell$.)

- (A) $qBs^2/2\ell$
- (B) qBs^2/ℓ
- (C) $qB\ell/s$
- (D) $qB\ell^2/2s$
- (E) $qB\ell^2/8s$

GO ON TO THE NEXT PAGE.

SCRATCHWORK

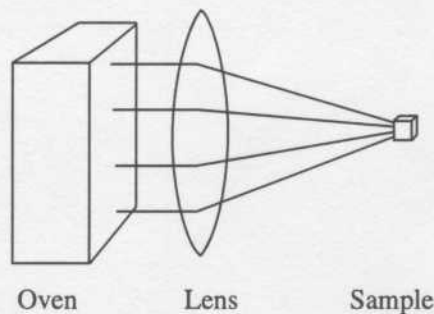


90.

THIS ITEM WAS NOT SCORED.

GO ON TO THE NEXT PAGE.

GO ON TO THE NEXT PAGE.



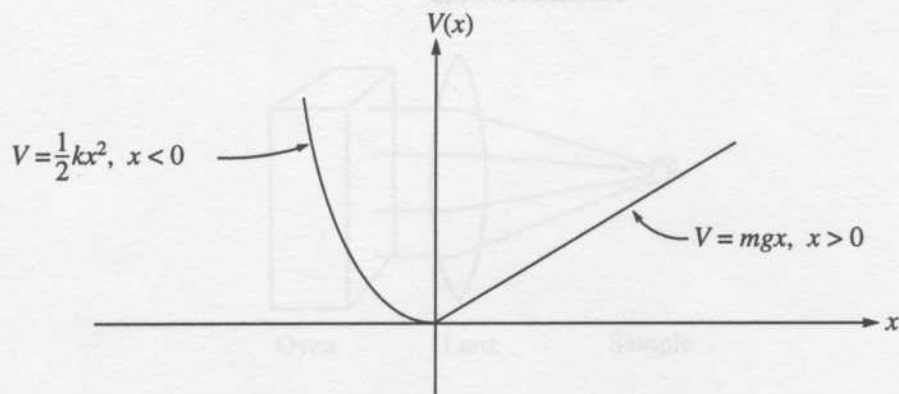
91. An experimenter needs to heat a small sample to 900 K, but the only available oven has a maximum temperature of 600 K. Could the experimenter heat the sample to 900 K by using a large lens to concentrate the radiation from the oven onto the sample, as shown above?
- (A) Yes, if the volume of the oven is at least $3/2$ the volume of the sample.
 - (B) Yes, if the area of the front of the oven is at least $3/2$ the area of the front of the sample.
 - (C) Yes, if the sample is placed at the focal point of the lens.
 - (D) No, because it would violate conservation of energy.
 - (E) No, because it would violate the second law of thermodynamics.

-
92. A particle of mass m moves in a one-dimensional potential $V(x) = -ax^2 + bx^4$, where a and b are positive constants. The angular frequency of small oscillations about the minima of the potential is equal to

- (A) $\pi(a/2b)^{1/2}$
- (B) $\pi(a/m)^{1/2}$
- (C) $(a/mb)^{1/2}$
- (D) $2(a/m)^{1/2}$
- (E) $(a/2m)^{1/2}$

GO ON TO THE NEXT PAGE.

GO ON TO THE NEXT PAGE.



93. A particle of mass m moves in the potential shown above. The period of the motion when the particle has energy E is

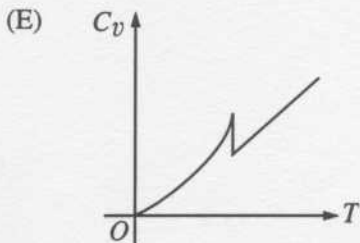
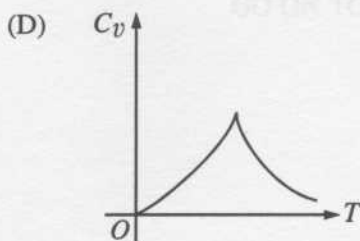
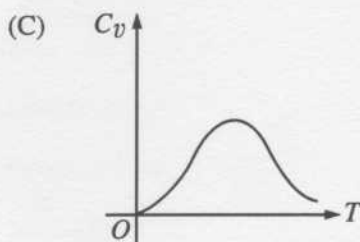
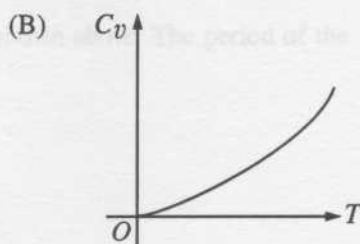
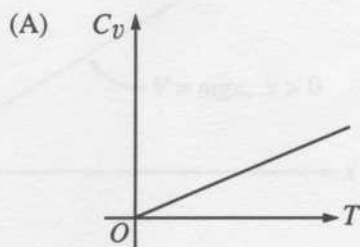
- (A) $\sqrt{k/m}$
- (B) $2\pi\sqrt{m/k}$
- (C) $2\sqrt{2E/mg^2}$
- (D) $\pi\sqrt{m/k} + 2\sqrt{2E/mg^2}$
- (E) $2\pi\sqrt{m/k} + 4\sqrt{2E/mg^2}$

GO ON TO THE NEXT PAGE.

94. A system consists of N weakly interacting subsystems, each with two internal quantum states with energies 0 and ϵ . The internal energy for this system at absolute temperature T is equal to

- (A) $N\epsilon$
 (B) $\frac{3}{2}NkT$
 (C) $N\epsilon e^{-\epsilon/kT}$
 (D) $\frac{N\epsilon}{(e^{\epsilon/kT} + 1)}$
 (E) $\frac{N\epsilon}{(1 + e^{-\epsilon/kT})}$

95. Which of the following curves is characteristic of the specific heat C_v of a metal such as lead, tin, or aluminum in the temperature region where it becomes superconducting?



96. Which of the following reasons explains why a photon cannot decay to an electron and a positron ($\gamma \rightarrow e^+ + e^-$) in free space?

- (A) Linear momentum and energy are not both conserved.
- (B) Linear momentum and angular momentum are not both conserved.
- (C) Angular momentum and parity are not both conserved.
- (D) Parity and strangeness are not both conserved.
- (E) Charge and lepton number are not both conserved.

97. A particle of mass m has the wave function $\psi(x, t) = e^{i\omega t} [\alpha \cos(kx) + \beta \sin(kx)]$, where α and β are complex constants and ω and k are real constants. The probability current density is equal to which of the following? (Note: α^* denotes the complex conjugate of α , and $|\alpha|^2 = \alpha^* \alpha$.)

- (A) 0
- (B) $\hbar k/m$
- (C) $\frac{\hbar k}{2m} (|\alpha|^2 + |\beta|^2)$
- (D) $\frac{\hbar k}{m} (|\alpha|^2 - |\beta|^2)$
- (E) $\frac{\hbar k}{2mi} (\alpha^* \beta - \beta^* \alpha)$

98. A particle of mass m is acted on by a harmonic force with potential energy function $V(x) = m\omega^2 x^2/2$ (a one-dimensional simple harmonic oscillator). If there is a wall at $x = 0$ so that $V = \infty$ for $x < 0$, then the energy levels are equal to

- (A) $0, \hbar\omega, 2\hbar\omega, \dots$
- (B) $0, \frac{\hbar\omega}{2}, \hbar\omega, \dots$
- (C) $\frac{\hbar\omega}{2}, \frac{3\hbar\omega}{2}, \frac{5\hbar\omega}{2}, \dots$
- (D) $\frac{3\hbar\omega}{2}, \frac{7\hbar\omega}{2}, \frac{11\hbar\omega}{2}, \dots$
- (E) $0, \frac{3\hbar\omega}{2}, \frac{5\hbar\omega}{2}, \dots$

GO ON TO THE NEXT PAGE.

99. The electronic energy levels of atoms of a certain gas are given by $E_n = E_1 n^2$, where $n = 1, 2, 3, \dots$. Assume that transitions are allowed between all levels. If one wanted to construct a laser from this gas by pumping the $n = 1 \rightarrow n = 3$ transition, which energy level or levels would have to be metastable?

(A) $n = 1$ only
 (B) $n = 2$ only
 (C) $n = 1$ and $n = 3$ only
 (D) $n = 1, n = 2$, and $n = 3$
 (E) None

100. The operator $\hat{a} = \sqrt{\frac{m\omega_0}{2\hbar}} (\hat{x} + i \frac{\hat{p}}{m\omega_0})$, when operating on a harmonic energy eigenstate Ψ_n with energy E_n , produces another energy eigenstate whose energy is $E_n - \hbar\omega_0$. Which of the following is true?

I. \hat{a} commutes with the Hamiltonian.
 II. \hat{a} is a Hermitian operator and therefore an observable.
 III. The adjoint operator $\hat{a}^\dagger \neq \hat{a}$.

(A) I only
 (B) II only
 (C) III only
 (D) I and II only
 (E) I and III only

IF YOU FINISH BEFORE TIME IS CALLED, YOU MAY CHECK YOUR WORK ON THIS TEST.

WORK SHEET for the PHYSICS Test, Form GR9677
Answer Key and Percentages* of Examinees Answering Each Question Correctly

| QUESTION | | | TOTAL | | QUESTION | | | TOTAL | |
|----------|--------|----|-------|---|----------|--------|----|-------|---|
| Number | Answer | P+ | C | I | Number | Answer | P+ | C | I |
| 1 | B | 73 | | | 51 | B | 70 | | |
| 2 | B | 29 | | | 52 | C | 15 | | |
| 3 | B | 55 | | | 53 | C | 34 | | |
| 4 | A | 34 | | | 54 | B | 18 | | |
| 5 | B | 29 | | | 55 | A | 30 | | |
| 6 | B | 43 | | | 56 | C | 42 | | |
| 7 | A | 22 | | | 57 | C | 41 | | |
| 8 | A | 37 | | | 58 | E | 22 | | |
| 9 | A | 40 | | | 59 | B | 36 | | |
| 10 | B | 47 | | | 60 | B | 9 | | |
| 11 | D | 36 | | | 61 | B | 26 | | |
| 12 | C | 36 | | | 62 | C | 13 | | |
| 13 | B | 37 | | | 63 | A | 56 | | |
| 14 | D | 66 | | | 64 | C | 26 | | |
| 15 | E | 12 | | | 65 | D | 44 | | |
| 16 | B | 20 | | | 66 | E | 25 | | |
| 17 | E | 40 | | | 67 | C | 28 | | |
| 18 | C | 77 | | | 68 | E | 61 | | |
| 19 | B | 17 | | | 69 | A | 14 | | |
| 20 | D | 20 | | | 70 | D | 14 | | |
| 21 | C | 27 | | | 71 | A | 20 | | |
| 22 | C | 26 | | | 72 | A | 29 | | |
| 23 | D | 24 | | | 73 | C | 34 | | |
| 24 | D | 70 | | | 74 | B | 21 | | |
| 25 | E | 38 | | | 75 | D | 27 | | |
| 26 | C | 13 | | | 76 | B | 52 | | |
| 27 | D | 49 | | | 77 | D | 12 | | |
| 28 | D | 40 | | | 78 | E | 36 | | |
| 29 | E | 58 | | | 79 | D | 22 | | |
| 30 | C | 28 | | | 80 | C | 31 | | |
| 31 | E | 65 | | | 81 | B | 27 | | |
| 32 | B | 41 | | | 82 | E | 15 | | |
| 33 | C | 56 | | | 83 | D | 15 | | |
| 34 | D | 31 | | | 84 | D | 20 | | |
| 35 | A | 79 | | | 85 | B | 15 | | |
| 36 | D | 46 | | | 86 | B | 36 | | |
| 37 | D | 53 | | | 87 | A | 6 | | |
| 38 | D | 39 | | | 88 | B | 57 | | |
| 39 | E | 54 | | | 89 | D | 18 | | |
| 40 | A | 21 | | | 90 | ** | ** | | |
| 41 | A | 28 | | | 91 | E | 25 | | |
| 42 | B | 52 | | | 92 | D | 15 | | |
| 43 | C | 17 | | | 93 | D | 26 | | |
| 44 | A | 48 | | | 94 | D | 28 | | |
| 45 | E | 45 | | | 95 | E | 23 | | |
| 46 | C | 36 | | | 96 | A | 28 | | |
| 47 | C | 28 | | | 97 | E | 11 | | |
| 48 | C | 30 | | | 98 | D | 39 | | |
| 49 | C | 22 | | | 99 | B | 44 | | |
| 50 | C | 33 | | | 100 | C | 51 | | |

Correct (C)

Incorrect (I)

Total Score:

C - I/4 = _____

Scaled Score (SS) = _____

* The P+ column indicates the percent of Physics Test examinees who answered each question correctly; it is based on a sample of December 1996 examinees selected to represent all Physics Test examinees tested between October 1, 1993, and September 30, 1996.

** Item 90 was not scored when this form of the test was originally administered.

**SCORE CONVERSIONS AND PERCENTS BELOW*
FOR GRE PHYSICS TEST, Form GR9677**

| TOTAL SCORE | | | | | |
|-------------|--------------|----|-----------|--------------|----|
| Raw Score | Scaled Score | % | Raw Score | Scaled Score | % |
| 67-99 | 990 | 97 | 30-31 | 690 | 59 |
| 65-66 | 980 | 96 | 29 | 680 | 57 |
| 64 | 970 | 96 | 28 | 670 | 55 |
| 63 | 960 | 95 | 27 | 660 | 53 |
| 62 | 950 | 95 | 26 | 650 | 50 |
| 61 | 940 | 94 | 24-25 | 640 | 48 |
| 59-60 | 930 | 93 | 23 | 630 | 45 |
| 58 | 920 | 92 | 22 | 620 | 43 |
| 57 | 910 | 91 | 21 | 610 | 40 |
| 56 | 900 | 91 | 19-20 | 600 | 38 |
| 54-55 | 890 | 90 | 18 | 590 | 35 |
| 53 | 880 | 89 | 17 | 580 | 32 |
| 52 | 870 | 88 | 16 | 570 | 29 |
| 51 | 860 | 86 | 15 | 560 | 27 |
| 50 | 850 | 85 | 13-14 | 550 | 25 |
| 48-49 | 840 | 84 | 12 | 540 | 23 |
| 47 | 830 | 83 | 11 | 530 | 20 |
| 46 | 820 | 82 | 10 | 520 | 18 |
| 45 | 810 | 81 | 9 | 510 | 15 |
| 44 | 800 | 79 | 7-8 | 500 | 13 |
| 42-43 | 790 | 77 | 6 | 490 | 11 |
| 41 | 780 | 76 | 5 | 480 | 9 |
| 40 | 770 | 74 | 4 | 470 | 7 |
| 39 | 760 | 73 | 3 | 460 | 6 |
| 38 | 750 | 71 | 1-2 | 450 | 4 |
| 36-37 | 740 | 69 | 0 | 440 | 3 |
| 35 | 730 | 67 | | | |
| 34 | 720 | 65 | | | |
| 33 | 710 | 63 | | | |
| 32 | 700 | 61 | | | |

*Percent scoring below the scaled score is based on the performance of 11,322 examinees who took the Physics Test between October 1, 1993 and September 30, 1996. This percent below information was used for score reports during the 1997-98 testing year.